



GMT MONTHLY MEMBERSHIP PROGRESS REPORT

Results as of: 4/30/2019

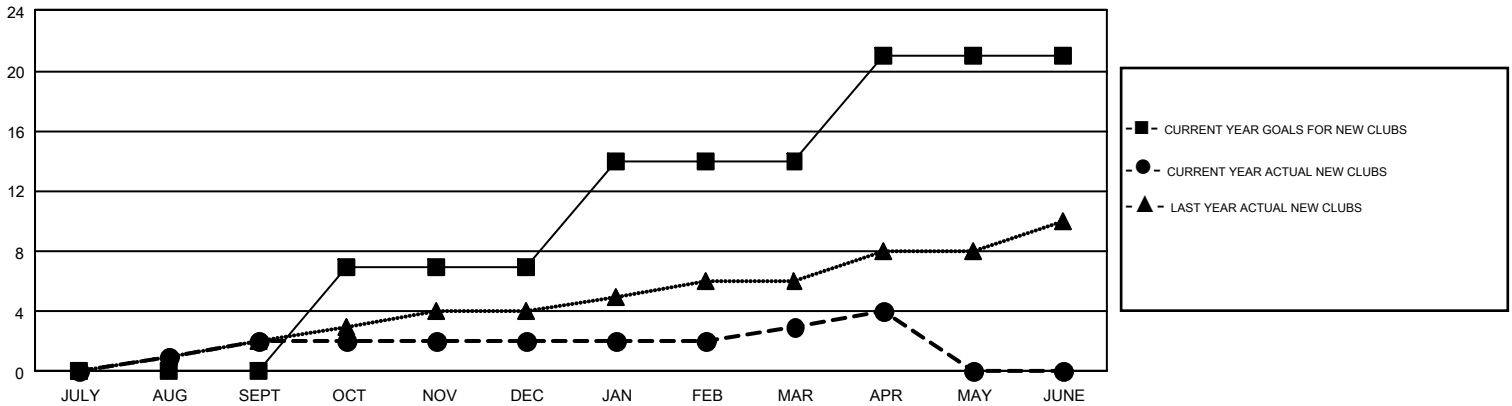
GMT Constitutional Area 7, Group A

GMT: ANN ELDRIDGE

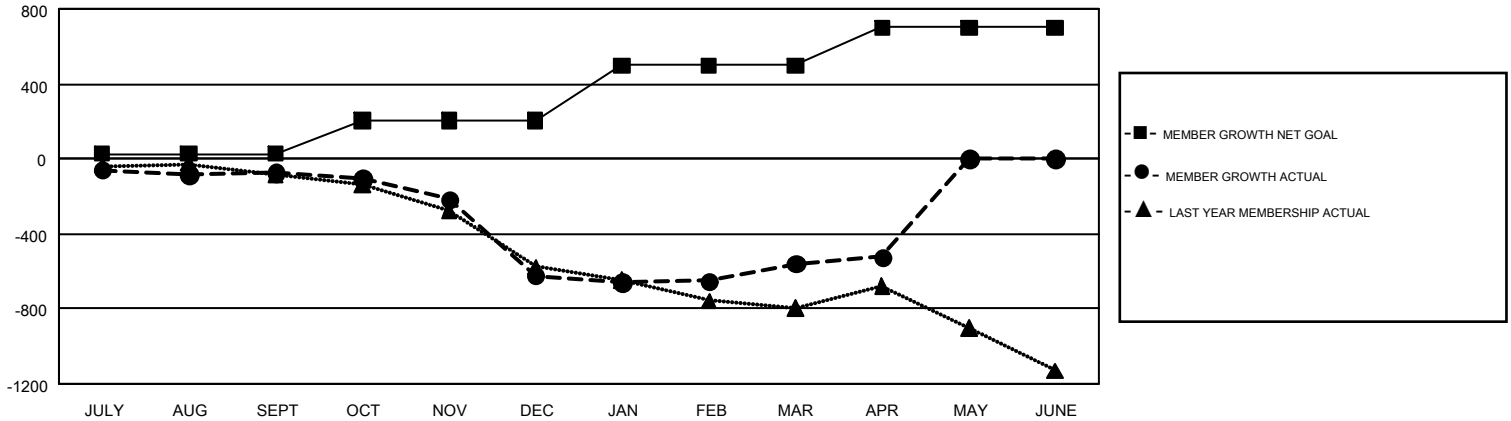
REPORT DOES NOT INCLUDE CLUBS IN UNDISTRICTED AREAS.

Clubs				Members			
RESULTS FOR 2018-2019				RESULTS FOR 2018-2019			
QUARTER	NEW CLUB GOAL	NEW CLUBS	DROPPED CLUBS	QUARTER	MEMBER GROWTH NET GOAL	MEMBER GROWTH ACTUAL	DROPPED MEMBERS ACTUAL (including transfers)
JULY/AUG/SEPT	0	2	7	JULY/AUG/SEPT	26	780	731
OCT/NOV/DEC	7	0	0	OCT/NOV/DEC	179	612	1,079
JAN/FEB/MAR	7	1	9	JAN/FEB/MAR	293	800	627
APR/MAY/JUNE	7	1	1	APR/MAY/JUNE	203	324	259

GOALS AND ACTUAL NEW CLUBS CUMULATIVE



GOALS AND ACTUAL MEMBERS CUMULATIVE



DROPPED CLUBS: 17	755 CLUBS OF 1,209 ADDED 1 OR MORE NEW MEMBERS	<u>GENDER DISTRIBUTION</u>
<u>DROPPED MEMBERS</u>	CLICK HERE FOR CUMULATIVE MEMBERSHIP DATA	MALE 16,487 (65.73%)
DECEASED 236		FEMALE 8,596 (34.27%)
CLUB CANCELLED 11		TOTAL FAMILY UNIT MEMBERS 4,238
OTHER 2,445		FAMILY MEMBERS PAYING HALF DUES 2,145
TOTAL 2,692		